



NEXT 285 LX

B - C
CATEGORY



8,80 M

Total Length



2,85 M

Beam



10(B)-12(C)

Persons



4

Beds



3.000 kg

Weight



2

Engine



400 - 600

Min - Max Power



2XL

Shaft Length



520 L

Fuel tank



130 L

Water tank

STANDARD FEATURES

8 Porteholes - Anchor hawse in stainless steel - Area living with sink - Bathroom cabinet with sink - Bilge pump with automatic/manual control - Blower - Bow and cabin sunpad cushions - Cockpit with Seadeck - Complete set of stainless steel handrails - Complete shower system - Electric anchor winch * - Electric flaps with Joystick - Electric horn - Electric marine toilet with waste water tank - Electric stern table and sunpad kit - Electrical system designed for N° 2 batteries - Electro-actuated battery switch with emergency manual control - Fiberglass stern platforms with telescopic ladder - Fuel level indicator - Fuel tank in cross-linked polyethylene - Full hydraulic steering until 600HP (Single Propeller) - Glove compartment - Hull redan HIS Gen III - Indoor upholstery - JL AUDIO Stereo system with 2 indoor and 4 outdoor speakers - Ladder - Luxury cabin equipment - Luxury dashboard - Luxury upholstery - Navigation lights - Recessed compass - Stainless steel external refrigerator - Stand-up cabinet in King Starboard - Telescopic cabin table - Waste water tank - Water level indicator - Water tank - White hull

OPTIONS

110/220 volts quay power socket with charger

2 Underwater lights

20L boiler

Aft cover

Air conditioning 110/220 volts

Air conditioning 12 volts

Auxiliary engine mount

Black or grey fiberglass Fly-Top painting

Black or grey gelcoat side colour **

Black painting of Fly-Top steel structure

Black painting of Rollbar steel structure

Black painting of stainless steel handrail

Black painting of windshield stainless steel profile

Boat fender style kit

Bow cover

Bow sun cover with 4 carbon poles

Bow thruster

Chain counter

Coffee machine with inverter

Console and driver seat cover

Console cover

Cooktop with one induction burner and inverter

Electric LED spotlight with joystick for Roll-Bar/Hard-Top/Fly-Top

Exclusive exterior upholstery

Fly-Top in white fiberglass - steel structure with extension (sun cover and 2 carbon poles)

Folding stainless steel Roll-Bar with double canopy

Front camera kit

Full hydraulic steering until 800HP (Single Propeller)

Hull cover

Indoor and outdoor LED kit

Italian flag on Hard-Top/Fly-Top

JL AUDIO 4 Speakers-2 Speakers cabin-2 Towers-1 Amplifiers 8 channels

LED Tv

Microwave oven with inverter

Mosquito net kit for cabin door

Openable bow portlight

Pack Electronic

Pack Living

Packaging with heat shrink PVC

Porthole curtain kit

Rear folding seat

Side folding seats

Ski pole kit

Smartphone holder with wireless charging

Stainless steel awning

Stainless steel fenders

Steering console grey or black

Stern sun cover with 4 carbon poles

System for additional battery

ZipWawe automatic trim correctors

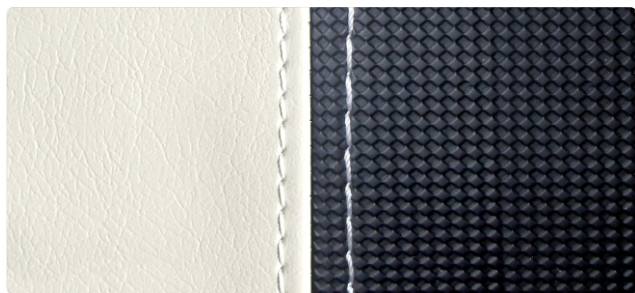
PACK

Pack Electronic: SIMRAD 12", VHF - RETE nMea 2000, Nautical Chart

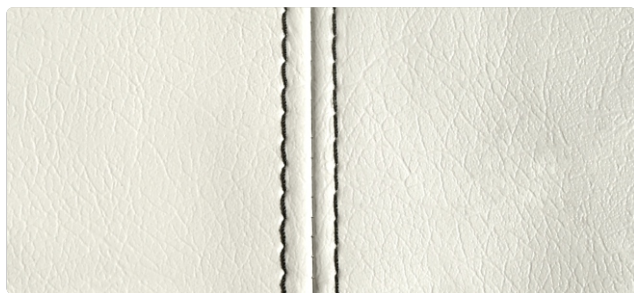
Pack Living: Stern sun cover with 4 carbon poles - Rear folding seat



Upholstery STANDARD

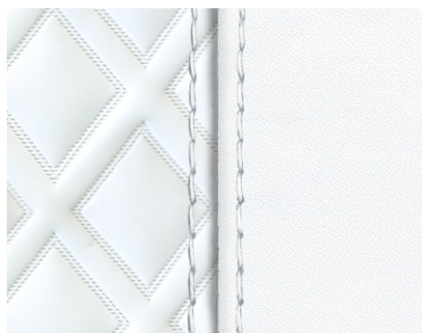


STD 01 Grey - Black



STD 02 Grey

Upholstery LUXURY



MLD 01 Maldives white



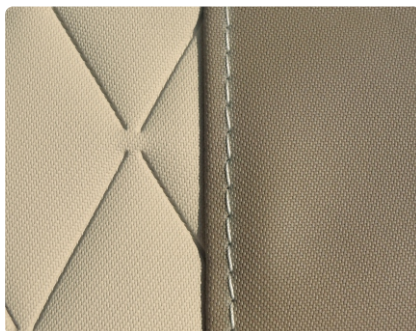
GST 01 Stone grey



BLM 01 Miami blue



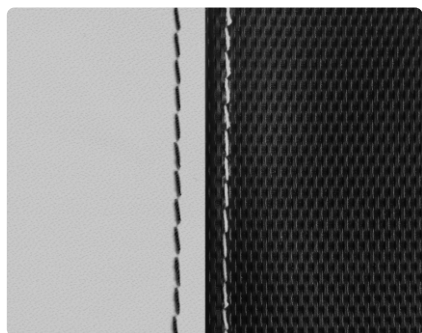
MTX 01 Matrix



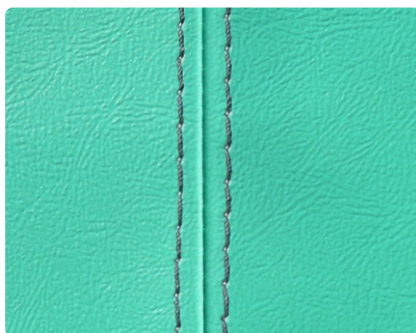
RMB 01 Diamond



CML 01 Camel



GNL 02 Grey - Black Lux



ACM 01 Sea water

GELCOAT



GLT 31 Ice White



GLT 32 Quantum Grey

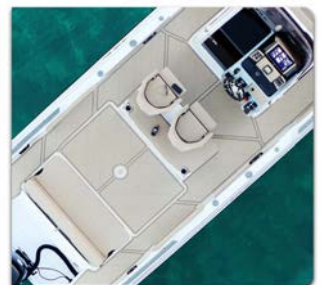


GLT 33 Carbon Black

SEADECK



SDK 41 Ligth Grey



SDK 43 Sahara Camel