



Ranieri
INTERNATIONAL

275 SL

**B - C
CATEGORY**



8,20 M

Total Length



2,55 M

Beam



9(B)-11(C)

Persons



2

Beds



2.100 kg

Weight



1XXL-2XL

Engine - Shaft
Length



250

Min. Power



450

Max. Power



390 L

Fuel tank



80 L

Water tank

STANDARD FEATURES

2 Comfort seats S-Line with bolster / Area living with sink * - 2 Console portholes with black plexiglass covering - 8 Cup holders - Anchor hawse in stainless steel - Bilge pump with automatic/manual control - Blower - Bow C-shaped dinette with sunpad extension - Bow seat - bow sofa - Cabin furniture in SAND oak - Compass - Complete set of stainless steel handrails - Complete shower system - Electric anchor winch ** - Electric horn - Electric marine toilet with waste water tank - Electrical system designed for N° 2 batteries - Electro-actuated battery switch with emergency manual control - Fuel level indicator - Fuel tank - Full hydraulic steering until 450 HP (single propeller) - Glove compartment - Hull profiles in BLACK plexiglass - Hull redan HIS Gen III - Indoor upholstery - Luxury cabin equipment - N° 2 Bow seat backrest - Navigation lights - Refrigerator - Standard outdoor upholstery - Stern passage in King Starboard - Stern platforms at floor level - Stern table in King Starboard - Telescopic stainless steel ladder - Tilting backrest for stern seat - White hull

OPTIONS

110/220 volts quay power socket with charger

2 Underwater lights

20L boiler

Aft cover

Black or grey fiberglass Fly-Top painting

Black or grey gelcoat side colour ***

Black painting of Fly-Top steel structure

Black painting of Rollbar steel structure

Black painting of stainless steel handrail

Black painting of windshield stainless steel profile

Boat fender style kit

Bow cover

Bow sun cover with 4 carbon poles

Bow table in King Starboard

Bow thruster

Chain counter

Cockpit with Seadeck

Console and driver seat cover

Console cover

Cooktop with one induction burner and inverter

Electric LED spotlight with joystick for Roll-Bar/Hard-Top/Fly-Top

Fly-Top in white fiberglass - steel structure with extension (sun cover and 2 carbon poles)

Folding stainless steel Roll-Bar with double canopy

Front camera kit

Full hydraulic steering until 800HP (Single Propeller)

Hull cover

Italian flag on Hard-Top/Fly-Top

JL AUDIO with 4 Speakers

JL AUDIO with 4 Speakers-2 Towers-1 Amplifiers 6 channels

Led Kit

Luxury dashboard

Luxury upholstery

Pack Electronic

Pack Living

Packaging with heat shrink PVC

Side folding seats

Ski pole kit

Smartphone holder with wireless charging

Stainless steel awning

Stainless steel fenders

Steering console grey or black

Stern sun cover with 4 carbon poles

Stern sunpad kit

System for additional battery

ZipWawe automatic trim correctors

PACK

Pack Electronic: SIMRAD 12", VHF - RETE nMea 2000, Nautical Chart

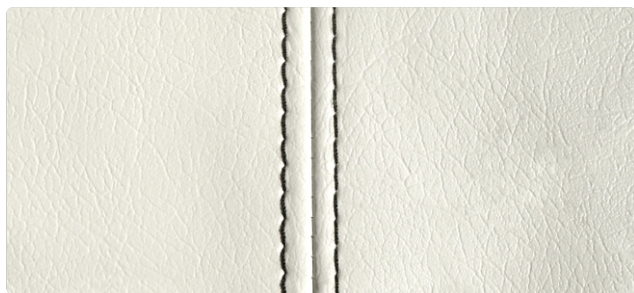
Pack Living: Stern sun cover with 4 carbon poles - Rear folding seat



Upholstery STANDARD

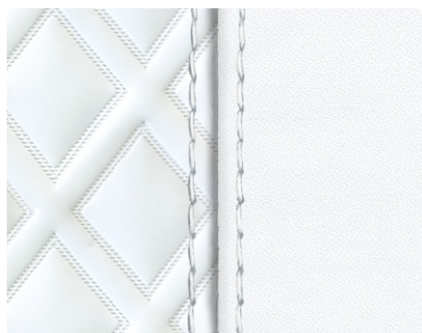


STD 01 Grey - Black



STD 02 Grey

Upholstery LUXURY



MLD 01 Maldives white



GST 01 Stone grey



BLM 01 Miami blue



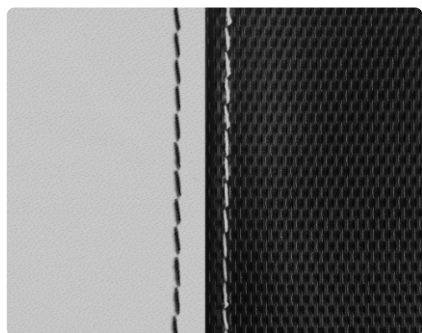
MTX 01 Matrix



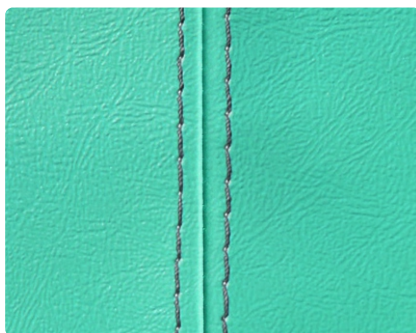
RMB 01 Diamond



CML 01 Camel



GNL 02 Grey - Black Lux



ACM 01 Sea water

GELCOAT



GLT 31 Ice White



GLT 32 Quantum Grey

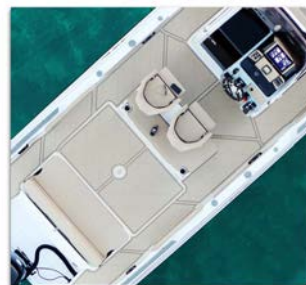


GLT 33 Carbon Black

SEADECK



SDK 41 Ligth Grey



SDK 43 Sahara Camel